

Provider: Sample Report
Patient:
Accession #:
Collected:

Sex:
Age:
Received:

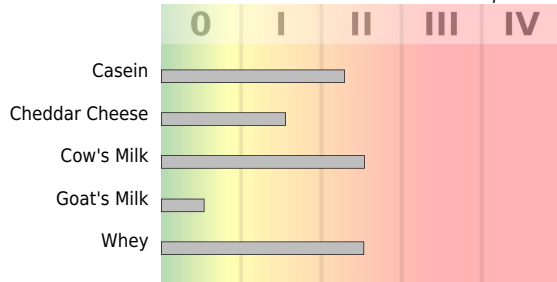
Sample Type: DBS
Date of Birth:
Completed:

IgG

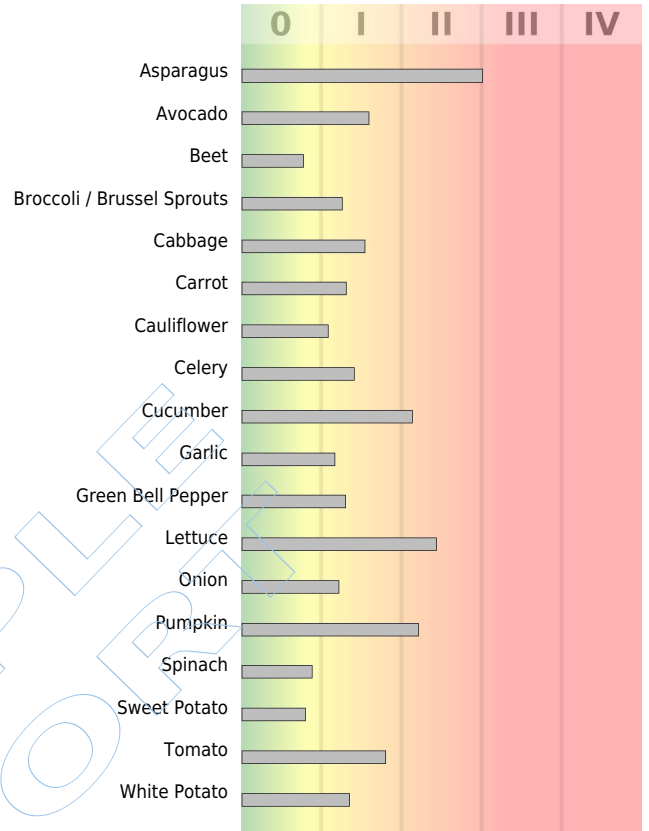
CLIA #: 50D0965661
 COLA accredited

Dairy

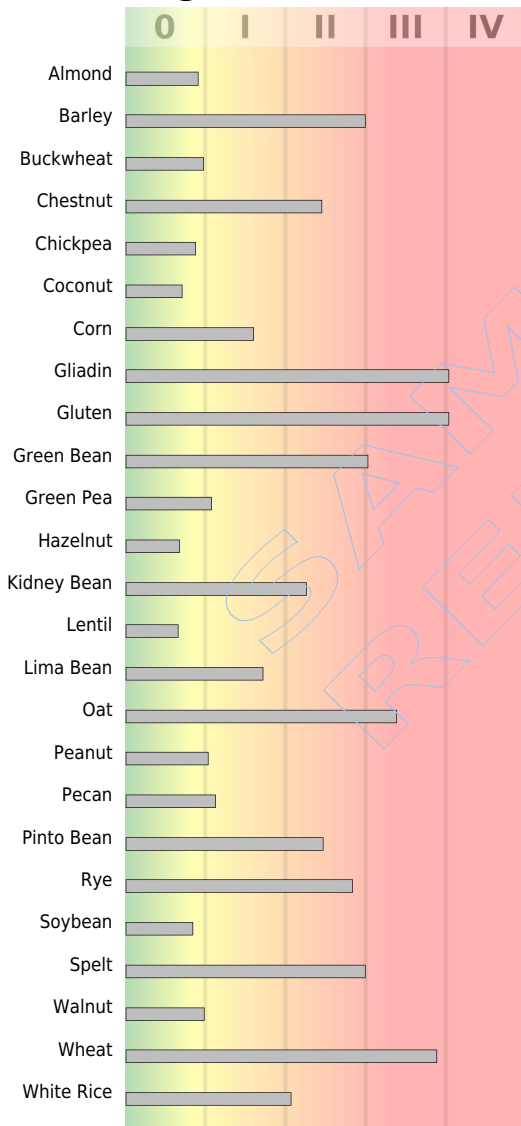
Bovine-derived unless specified



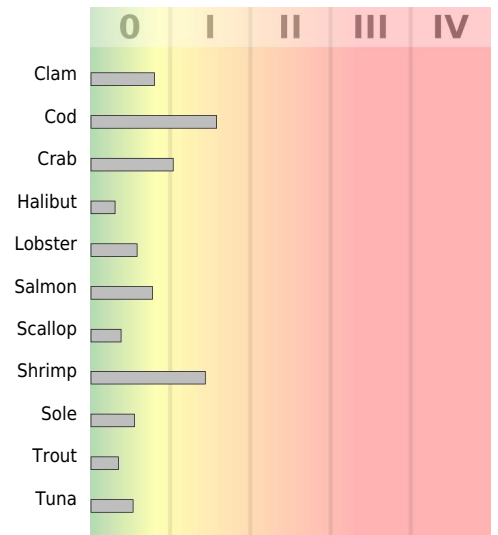
Vegetables



Grains/Legumes/Nuts



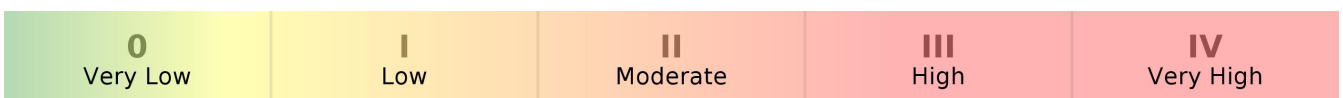
Fish/Crustacea/Mollusk



© US BioTek Laboratories

Reaction Class

Director: Jillian Harrington, PhD, HCLD (ABB)



US BioTek Laboratories' proprietary ELISA analyses are designed to assay specific IgG (subclasses 1, 2, 3, 4) and IgA (subclasses 1, 2) antibodies. The classification of 0 to IV denotes the level of IgG and/or IgA antibodies detected through spectrophotometric analysis. The antigens on the panel are subject to change without prior notice. Reference ranges are updated periodically. This test was developed and its performance characteristics determined by US BioTek Laboratories, LLC, 16020 Linden Ave N, Shoreline, WA 98133, USA. Test methodology has not been cleared or approved by the U.S. Food and Drug Administration.

Provider: Sample Report
Patient:
Accession #:
Collected:

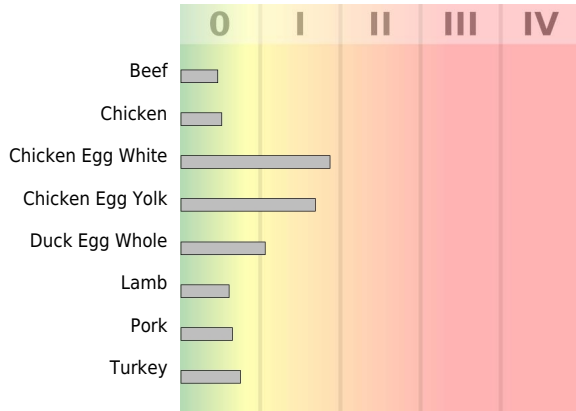
Sex:
Age:
Received:

Sample Type: DBS
Date of Birth:
Completed:

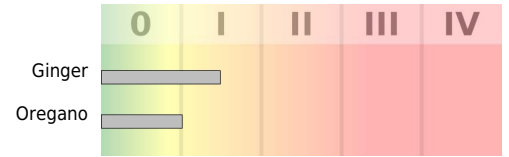
IgG

CLIA #: 50D0965661
 COLA accredited

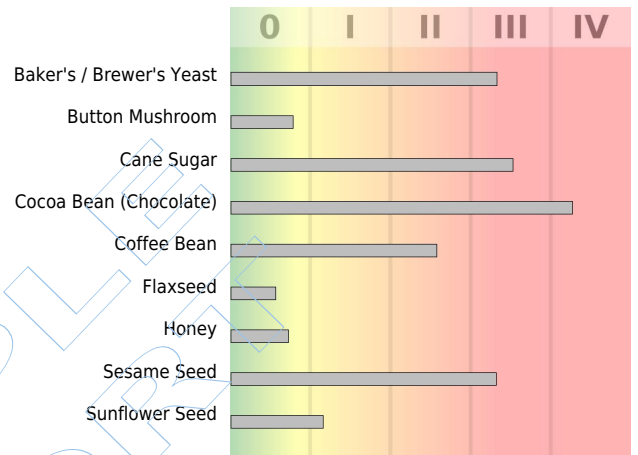
Egg/Meat/Poultry



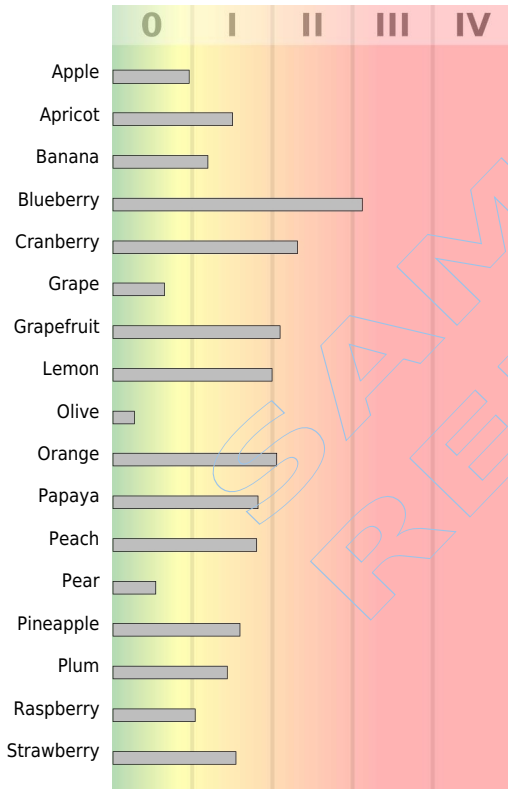
Herbs/Spices



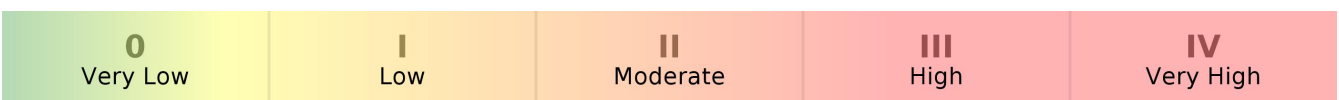
Miscellaneous



Fruits



Candida Screen



Provider: Sample Report
Patient:
Accession #:
Collected:

Sex:
Age:
Received:

Sample Type: DBS
Date of Birth:
Completed:

IgG

CLIA #: 50D0965661
 COLA accredited

Dairy

Antigen Name	Analyte	Class	Value	Very Low Range
Casein	IgG	Moderate	5.88 mg/L	<3 mg/L
Cheddar Cheese	IgG	Low	4.12 mg/L	<3 mg/L
Cow's Milk	IgG	Moderate	6.17 mg/L	<2 mg/L
Goat's Milk	IgG	Very Low	1.07 mg/L	<2 mg/L
Whey	IgG	Moderate	6.13 mg/L	<2 mg/L

Grains/Legumes/Nuts

Antigen Name	Analyte	Class	Value	Very Low Range
Almond	IgG	Very Low	2.74 mg/L	<3 mg/L
Barley	IgG	High	8.01 mg/L	<3 mg/L
Buckwheat	IgG	Very Low	2.91 mg/L	<3 mg/L
Chestnut	IgG	Moderate	11.64 mg/L	<4 mg/L
Chickpea	IgG	Very Low	2.61 mg/L	<3 mg/L
Coconut	IgG	Very Low	2.87 mg/L	<4 mg/L
Corn	IgG	Low	6.43 mg/L	<4 mg/L
Gladiin	IgG	Very High	19.80 mg/L	<3.5 mg/L
Gluten	IgG	Very High	19.90 mg/L	<3.5 mg/L
Green Bean	IgG	High	16.52 mg/L	<8 mg/L
Green Pea	IgG	Low	3.14 mg/L	<3 mg/L
Hazelnut	IgG	Very Low	2.71 mg/L	<4 mg/L
Kidney Bean	IgG	Moderate	13.08 mg/L	<8 mg/L
Lentil	IgG	Very Low	2.66 mg/L	<4 mg/L
Lima Bean	IgG	Low	4.46 mg/L	<3 mg/L
Oat	IgG	High	12.37 mg/L	<4 mg/L
Peanut	IgG	Low	4.15 mg/L	<4 mg/L
Pecan	IgG	Low	4.50 mg/L	<4 mg/L
Pinto Bean	IgG	Moderate	11.77 mg/L	<4 mg/L
Rye	IgG	Moderate	14.79 mg/L	<4 mg/L
Soybean	IgG	Very Low	2.52 mg/L	<3 mg/L
Spelt	IgG	High	16.01 mg/L	<6 mg/L
Walnut	IgG	Very Low	4.92 mg/L	<5 mg/L
Wheat	IgG	High	15.36 mg/L	<3.5 mg/L
White Rice	IgG	Moderate	6.29 mg/L	<3.5 mg/L

Vegetables

Antigen Name	Analyte	Class	Value	Very Low Range
Asparagus	IgG	High	16.20 mg/L	<5 mg/L
Avocado	IgG	Low	3.20 mg/L	<2 mg/L
Beet	IgG	Very Low	4.64 mg/L	<6 mg/L
Broccoli / Brussel Sprouts	IgG	Low	9.72 mg/L	<7.5 mg/L
Cabbage	IgG	Low	5.96 mg/L	<3.5 mg/L
Carrot	IgG	Low	5.26 mg/L	<4 mg/L
Cauliflower	IgG	Low	3.16 mg/L	<3 mg/L
Celery	IgG	Low	5.67 mg/L	<4 mg/L
Cucumber	IgG	Moderate	6.57 mg/L	<3 mg/L
Garlic	IgG	Low	6.70 mg/L	<6 mg/L
Green Bell Pepper	IgG	Low	5.20 mg/L	<4 mg/L
Lettuce	IgG	Moderate	10.42 mg/L	<3.5 mg/L
Onion	IgG	Low	4.07 mg/L	<3.5 mg/L
Pumpkin	IgG	Moderate	7.33 mg/L	<3 mg/L
Spinach	IgG	Very Low	3.10 mg/L	<3.5 mg/L
Sweet Potato	IgG	Very Low	5.66 mg/L	<7 mg/L
Tomato	IgG	Low	4.57 mg/L	<2.8 mg/L
White Potato	IgG	Low	6.07 mg/L	<5 mg/L

Fish/Crustacea/Mollusk

Antigen Name	Analyte	Class	Value	Very Low Range
Clam	IgG	Very Low	1.99 mg/L	<2.5 mg/L
Cod	IgG	Low	4.15 mg/L	<3 mg/L
Crab	IgG	Low	3.06 mg/L	<3 mg/L

Fish/Crustacea/Mollusk (Continued)

Antigen Name	Analyte	Class	Value	Very Low Range
Halibut	IgG	Very Low	0.60 mg/L	<2 mg/L
Lobster	IgG	Very Low	2.34 mg/L	<4 mg/L
Salmon	IgG	Very Low	2.33 mg/L	<3 mg/L
Scallop	IgG	Very Low	1.16 mg/L	<3 mg/L
Shrimp	IgG	Low	3.58 mg/L	<2.5 mg/L
Sole	IgG	Very Low	1.35 mg/L	<2.5 mg/L
Trout	IgG	Very Low	0.85 mg/L	<2.5 mg/L
Tuna	IgG	Very Low	2.69 mg/L	<5 mg/L

Egg/Meat/Poultry

Antigen Name	Analyte	Class	Value	Very Low Range
Beef	IgG	Very Low	1.38 mg/L	<3 mg/L
Chicken	IgG	Very Low	2.06 mg/L	<4 mg/L
Chicken Egg White	IgG	Low	6.53 mg/L	<3.5 mg/L
Chicken Egg Yolk	IgG	Low	4.37 mg/L	<3 mg/L
Duck Egg Whole	IgG	Low	2.92 mg/L	<2.8 mg/L
Lamb	IgG	Very Low	1.82 mg/L	<3 mg/L
Pork	IgG	Very Low	1.92 mg/L	<3 mg/L
Turkey	IgG	Very Low	2.23 mg/L	<3 mg/L

Fruits

Antigen Name	Analyte	Class	Value	Very Low Range
Apple	IgG	Very Low	4.83 mg/L	<5 mg/L
Apricot	IgG	Low	3.00 mg/L	<2 mg/L
Banana	IgG	Low	4.78 mg/L	<4 mg/L
Blueberry	IgG	High	18.03 mg/L	<8 mg/L
Cranberry	IgG	Moderate	8.45 mg/L	<2.8 mg/L
Grape	IgG	Very Low	3.26 mg/L	<5 mg/L
Grapefruit	IgG	Moderate	6.10 mg/L	<3 mg/L
Lemon	IgG	Low	5.98 mg/L	<3.5 mg/L
Olive	IgG	Very Low	0.54 mg/L	<2 mg/L
Orange	IgG	Moderate	5.63 mg/L	<3 mg/L
Papaya	IgG	Low	7.30 mg/L	<4 mg/L
Peach	IgG	Low	5.52 mg/L	<3.5 mg/L
Pear	IgG	Very Low	1.08 mg/L	<4 mg/L
Pineapple	IgG	Low	12.75 mg/L	<8 mg/L
Plum	IgG	Low	4.43 mg/L	<3.2 mg/L
Raspberry	IgG	Low	4.12 mg/L	<4 mg/L
Strawberry	IgG	Low	5.74 mg/L	<3 mg/L

Herbs/Spices

Antigen Name	Analyte	Class	Value	Very Low Range
Ginger	IgG	Low	13.94 mg/L	<12 mg/L
Oregano	IgG	Low	6.03 mg/L	<6 mg/L

Miscellaneous

Antigen Name	Analyte	Class	Value	Very Low Range
Baker's / Brewer's Yeast	IgG	High	21.43 mg/L	<3.5 mg/L
Button Mushroom	IgG	Very Low	6.31 mg/L	<8 mg/L
Cane Sugar	IgG	High	40.50 mg/L	<12 mg/L
Cocoa Bean (Chocolate)	IgG	Very High	62.81 mg/L	<24 mg/L
Coffee Bean	IgG	Moderate	14.36 mg/L	<8 mg/L
Flaxseed	IgG	Very Low	1.70 mg/L	<3 mg/L
Honey	IgG	Very Low	2.88 mg/L	<4 mg/L
Sesame Seed	IgG	High	21.23 mg/L	<8 mg/L
Sunflower Seed	IgG	Low	3.91 mg/L	<3.5 mg/L

Candida Screen

Antigen Name	Analyte	Class	Value	Very Low Range
Candida albicans	IgG	Very High	73.98 mg/L	<25 mg/L